



# 产品说明书

## Product manual

# LB115、MX115SUB

专业会议扬声器系统



## 产品简介:

LB115、MX115SUB是一款无源单15寸超低频扬声器系统，采用一只顶级15寸单元设计。LB115、MX115SUB是MOM工程师专为搭配小尺寸全频箱而开发的低频扬声器系统。

LB115作为LS系列线性阵列的低频扩展和堆叠模式的物理基座，配有吊挂系统，可以搭配LS1线阵音箱一起使用，成为一款创新式的分体外置三分频线阵列音箱系统。由于采用分体式设计，使得箱体尺寸极致的小巧，无论是大型户外演唱会，大型会议室，又或者是酒吧等多种应用场合LB115、LS1系统都能轻松应对。

MX115SUB适合放置在地面上固定安装，搭配MB108、MX112等音箱一起使用。



LB115



MX115SUB

LB115、MX115SUB is a passive single 15-inch ultra-low frequency speaker system, which adopts a top-level 15-inch unit design. LB115、MX115SUB is a low-frequency speaker system developed by MOM engineers for matching with small-sized full-frequency boxes.

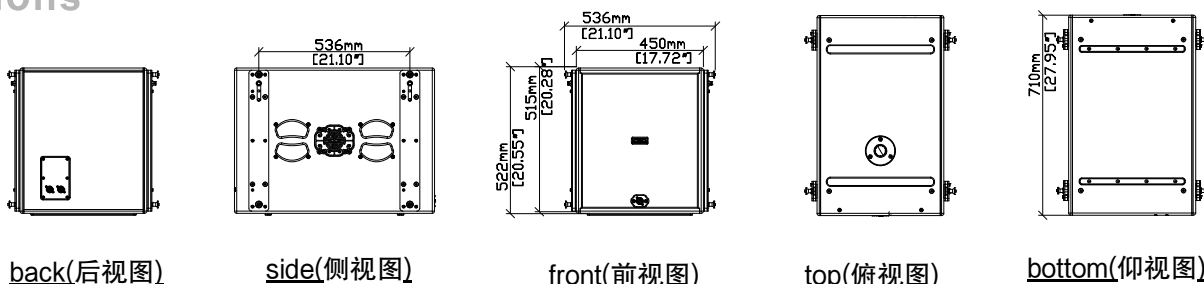
LB115, as the physical base of LS series linear array in low frequency expansion and stacking mode, is equipped with a hanging system, which can be used together with LS1 linear array speaker, and becomes an innovative split external three-frequency line array speaker system. Due to the split design, the cabinet size is extremely small, which can be easily handled by LB115&LS1 system in various applications such as large outdoor concerts, large conference rooms, or bars.

The split design makes LB115&LS1 system have a variety of flexible hanging installation and stacking methods; Users can choose the appropriate hanging combination mode according to different applications (for example, LS1 is in front, LB115 is behind or LS1 is in the middle, LB115 is on both sides, etc.).

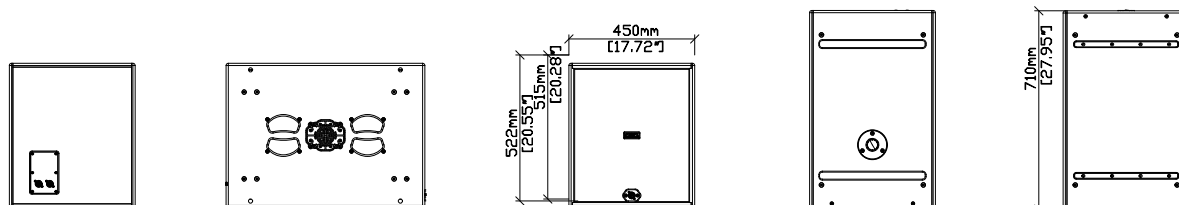
The MX115SUB is suitable for fixed installation on the ground, and can be used together with speakers such as MB108 and MX112.

## Dimensions

### LB115



### MX115SUB



# LB115、MX115SUB

专业会议扬声器系统



<b>技术指标:</b> Technical data:	
频率响应(+/-3dB): Frequency Response(+/-3dB)	45-350Hz
频率响应(-10dB): Frequency Range(-10dB)	39-350Hz
推荐高通滤波器: Recommended High-Pass Protection Filter	39Hz最小12dB/倍频程滤波器
建议分频点: Recommended Crossover	100-350 Hz(需要DSP中的主频分频)
额定(AES)/峰值功率: Power handling capacity(RMS/peak 10 ms)	900W/3600W
系统灵敏度: Sensitivity(SPL/1W@1m)(2)	97dB
最大声压级(SPL@1m)峰值: Calculated Maximum SPL@1m,peak	132.5dB
<b>扬声器:</b> Transducers	
低音扬声器: Low Frequency	1 × 15" 18Sound低音扬声器 (3.5"voice coil )
额定阻抗: Nominal Impedance	8Ω
<b>箱体:</b> Physical	
木箱材料: Enclosure Material	俄罗斯桦木板
表面喷涂: Finish	黑色聚脲漆(可定制色)
防水等级: Environmental	1px3
连接器: Connectors	3x Neutrik NL4
安装: Suspension/Mounting	搭配专用吊架串吊
净重量:(MX115SUB) Net Weight	36.5 kg(80.46lbs)
净重量:(LB115) Net Weight	46 kg(101.41lbs)

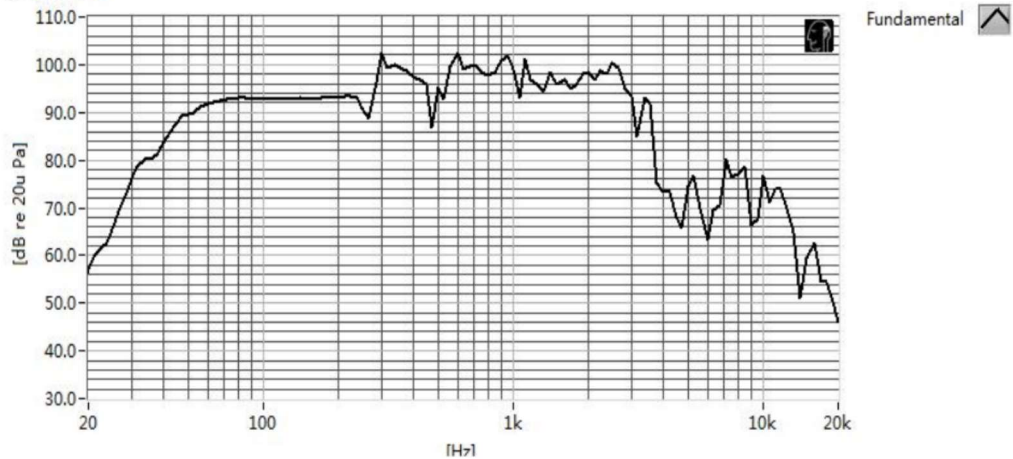
# LB115、MX115SUB

专业会议扬声器系统



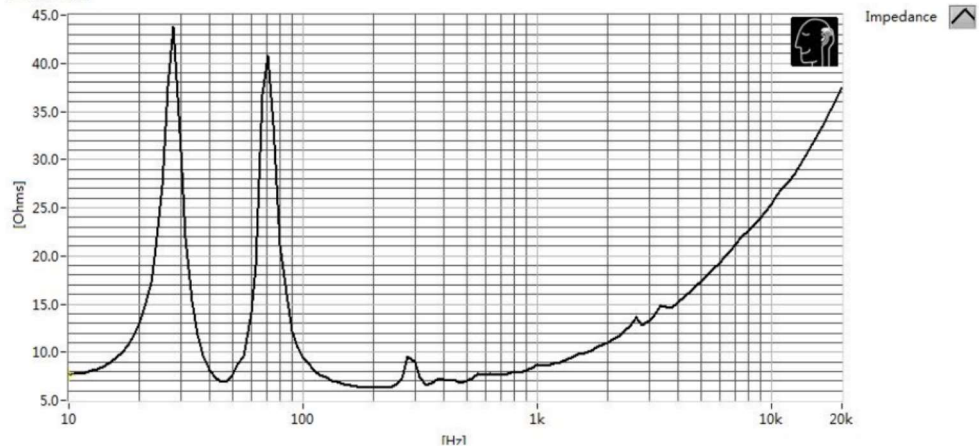
## Frequency Response

频响曲线



## Impedance

阻抗曲线



注悉：

1.以上频响曲线及参数均在消声环境中测得.

2.相关测试执行以下标准：

GB/T9397-2013《直接辐射式电动扬声器通用规范》.

GB/T12060.5-2011《声系统设备 第5部分：扬声器主要性能测试方法》.

3.额定功率按照AES标准2小时连续时间.

4.本公司保留最终解释权.

广州美妙科技有限公司  
GUANG ZHOU MEI MIAO TECHNOLOGY CO.,LTD

地址：广州市番禺区山西路600号大夫山文体创意产业园B栋202  
电话：02085826692 网址：<http://www.mompro.cn/>